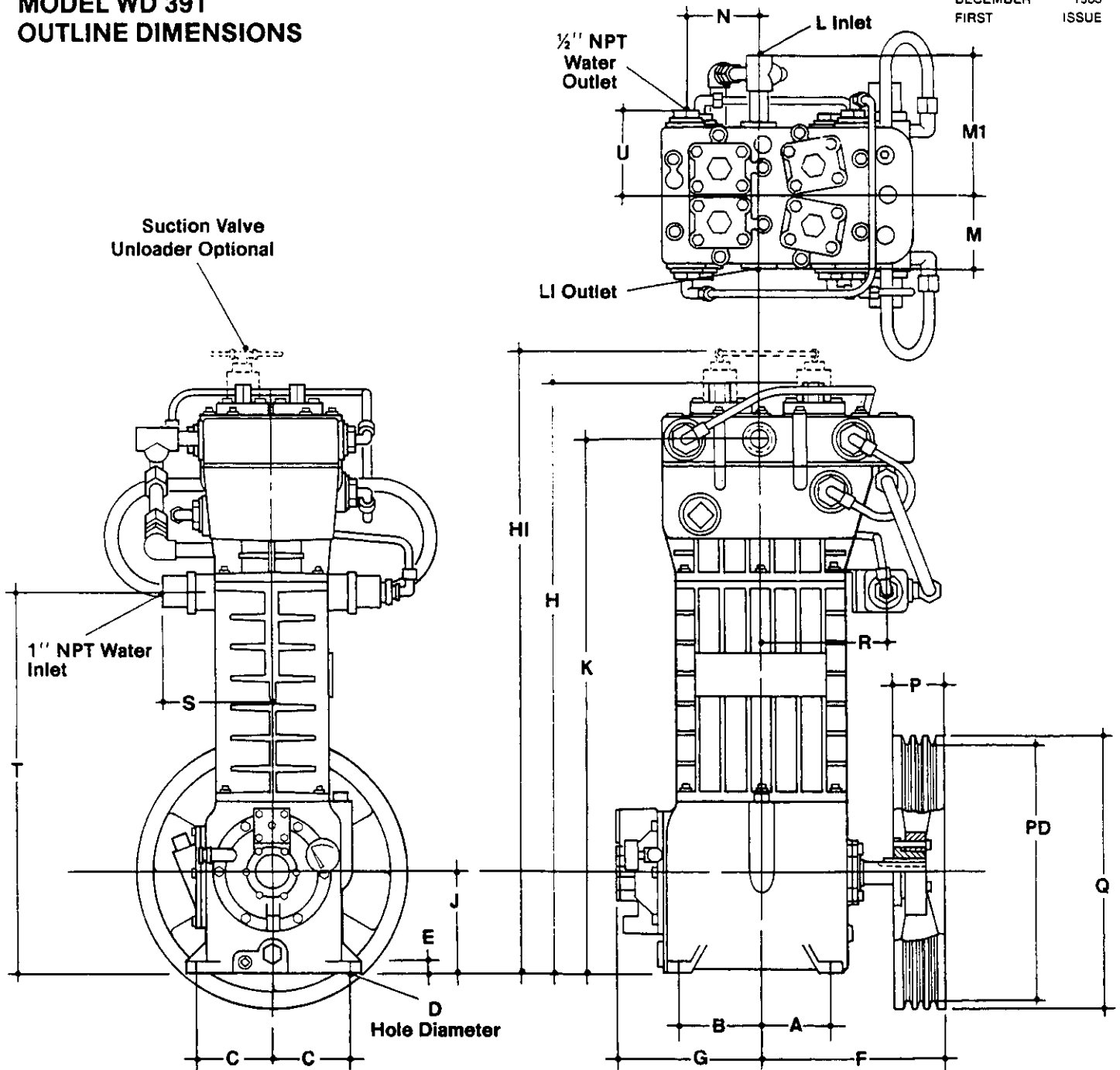


**MODEL WD 391
OUTLINE DIMENSIONS**

DECEMBER 1985
FIRST ISSUE



DIMENSIONS IN INCHES (CENTIMETERS)

Model No.	A	B	C	D	E	F	G	H	H1	J	K	L	L1	M	M1	N	P	Q	R	S	T	U
WD 391	4 $\frac{1}{8}$ (10.4)	5 (12.7)	4 $\frac{1}{4}$ (11.9)	$\frac{1}{2}$ (1.27)	1 $\frac{1}{8}$ (1.95)	10 $\frac{1}{4}$ (27.2)	8 $\frac{3}{4}$ (22.2)	34 $\frac{1}{4}$ (87.1)	38 $\frac{1}{2}$ (92.2)	5 $\frac{1}{2}$ (14.9)	30 $\frac{1}{4}$ (78.6)	1 NPT	$\frac{3}{4}$ NPT	4 $\frac{1}{8}$ (10.9)	8 $\frac{3}{4}$ (20.7)	4 $\frac{1}{2}$ (10.7)	3 (7.82)	16 (40.6) 14* (35.6)	7 $\frac{1}{8}$ (18.5)	6 $\frac{1}{4}$ (16.9)	21 $\frac{1}{4}$ (55.0)	5 (12.7)

PD Flywheel Pitch Dia.			
A-Belt Grooves	B-Belt Grooves	A-Belt Grooves	B-Belt Grooves
15.2 (38.6)	3	15.6 (39.6)	3
13.2* (33.5)	2	13.6* (34.5)	2